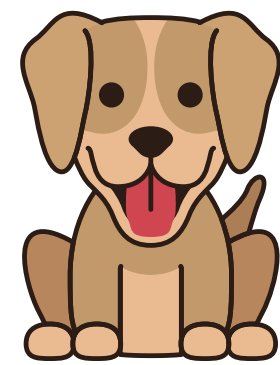
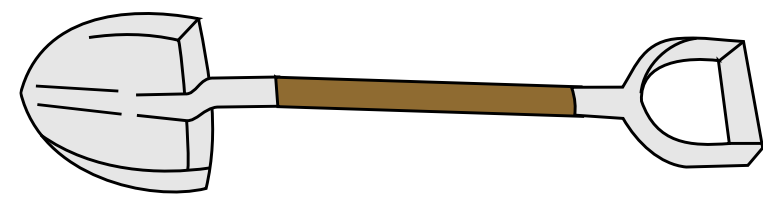
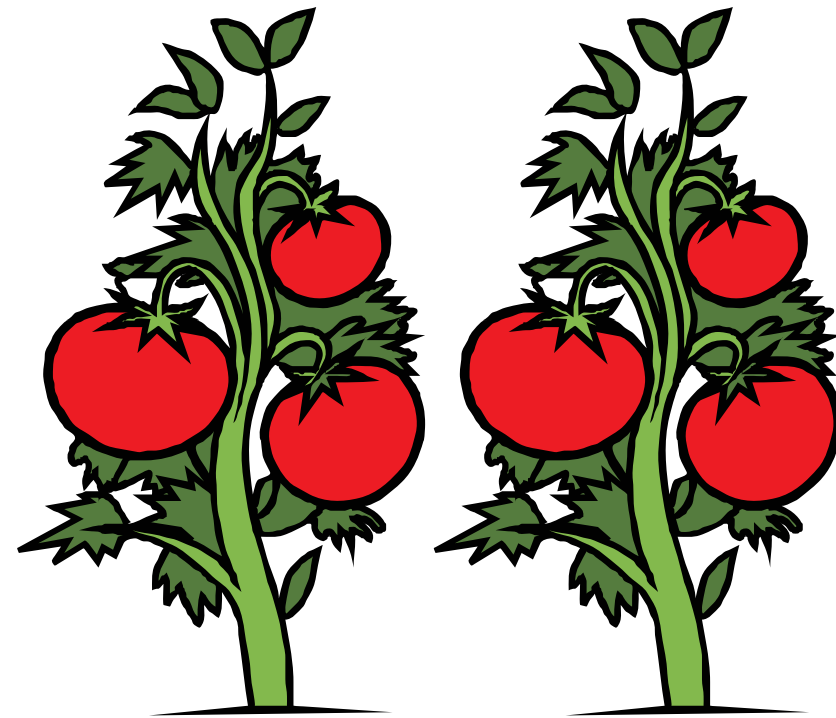
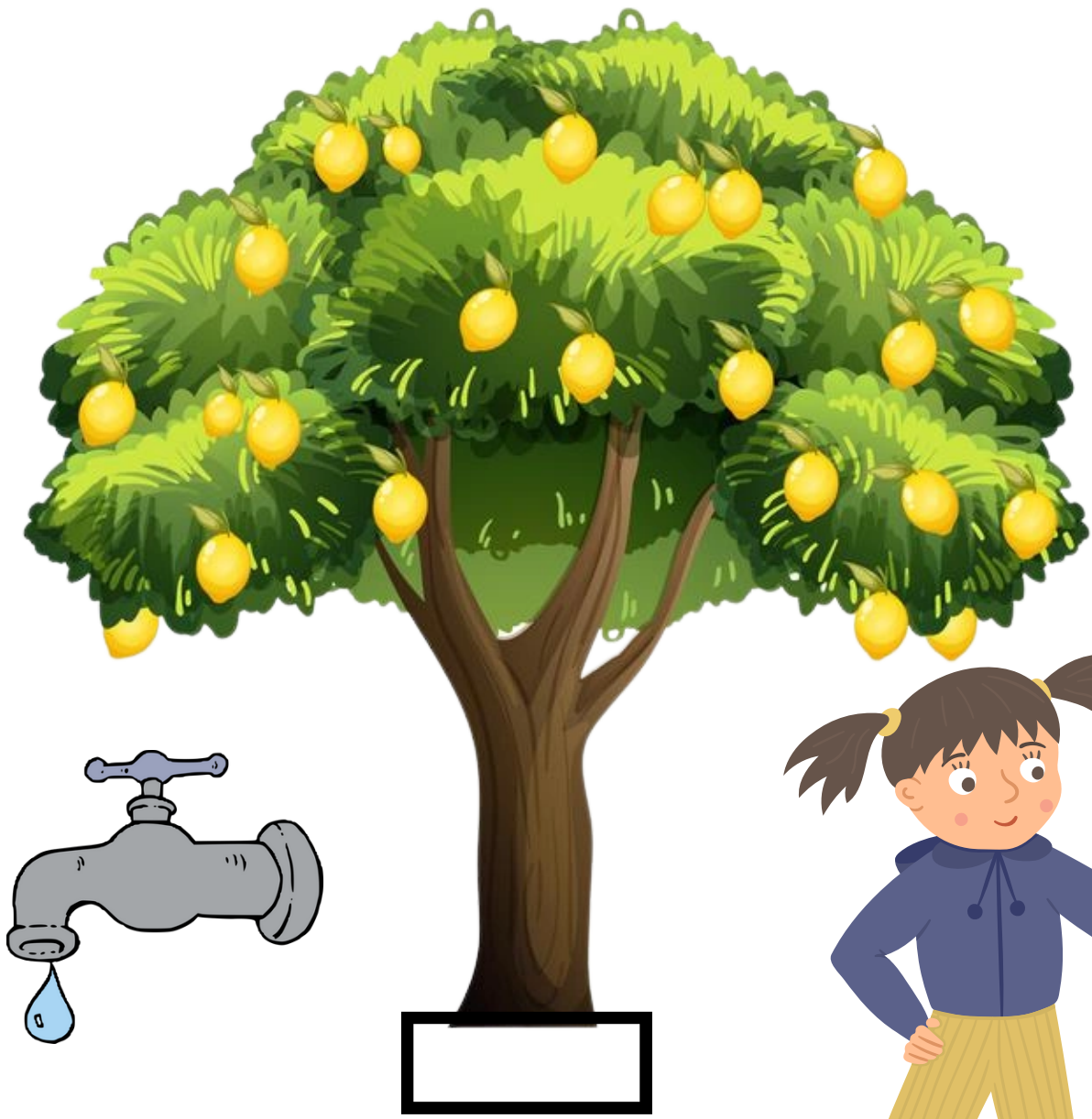
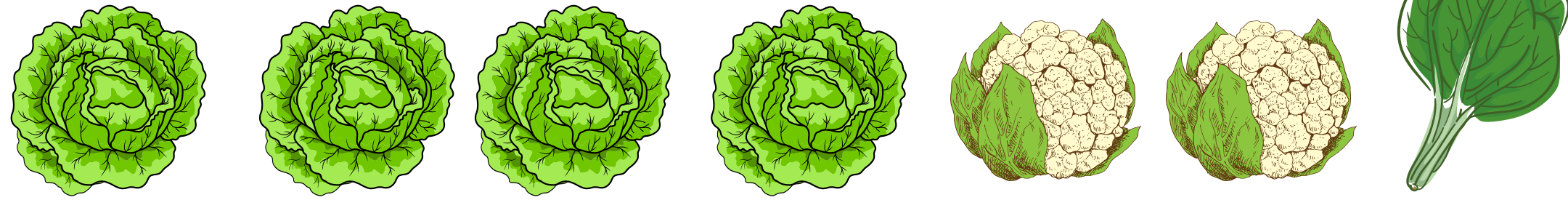
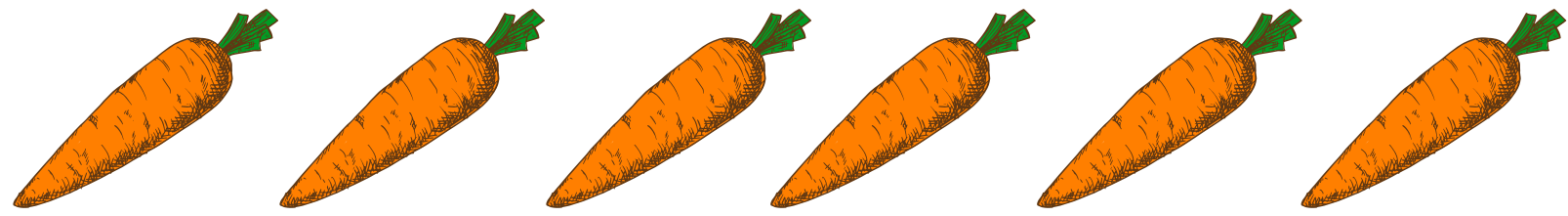


# MY ALLOTMENT

---

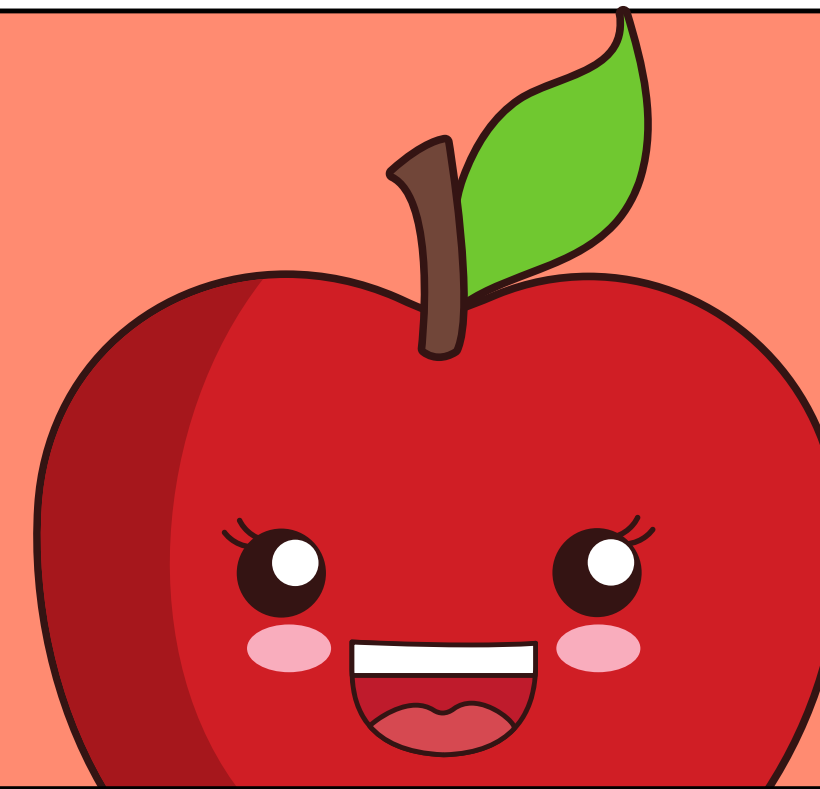
---





## Color

- **Carrots:** Orange root and Green leaves
- **Lettuce:** All with different types of green.
- **Cauliflower:** green leaves and white flower
- **Swiss chard:** purple stem and green leaves.
- **Pumpkin:** orange fruit and green stem.
- **Tomato:** green leaves, green stem and red fruit.
- **Lemon tree:** brown trunk, green and brown leaves and yellow lemons.
- **Fence:** brown
- **Rake:** yellow handle and gray rake.
- **Shovel:** green handle, brown stick and green shovel.
- **Watering can:** red and pink
- **Bucket:** purple
- **Soil:** yellow bag and brown soil.
- **Faucet:** gray
- **Scarecrow:** brown hat, blond hair, blue jacket and brown stick.
- **Girl:** brown hair, blue jacket, yellow pants, green boots, wheat color face and hands.
- **Boy:** red hat, black hair, green jacket, brown pants, yellow boots and wheat color face and hands.
- **Dog:** choose the color.



## Stick

- Divide the allotment in two spaces.
- Stick the lemon tree into the allotment on the right at the top.
- Stick the tap next to the lemon tree and the bucket under the tap.
- Put the same number of vegetables in each garden by making beds of the same type.
- Stick a watering can in each garden at the bottom in the left corner.
- Put the shelve next to the first allotment.
- .Put the rake next to the second allotment.
- Stick the scarecrow between the two allotments.
- Put the girl and the boy wherever you want.
- Stick the dog next to the boy.