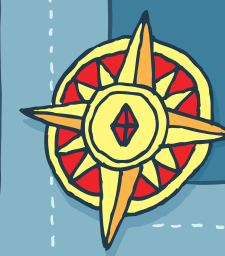




N



10

5

2

4

1

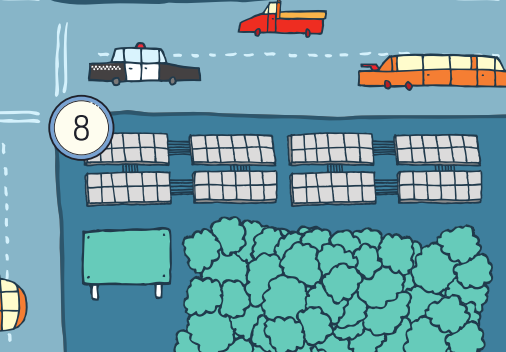
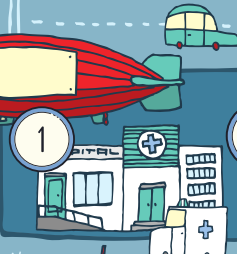
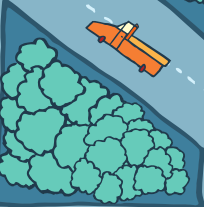
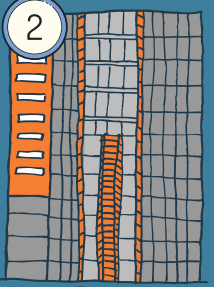
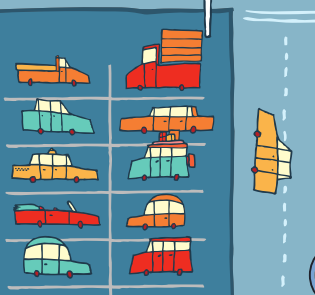
3

9

6

7

8



Vocabulary

1.Hospital

2.Train station

3.Café

4.Police station

5.Museum

6. Supermarket

7. Newsagent's

8.Bus stop

9.Cinema

10. Shops

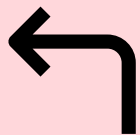
EXTRA

Post office Parking

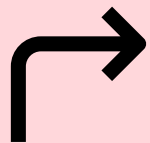
Park Bakery

Hotel Factory

Giving directions



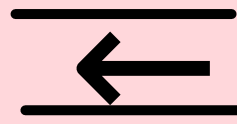
Turn left



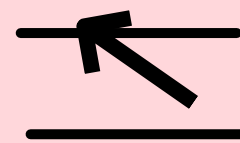
Turn right



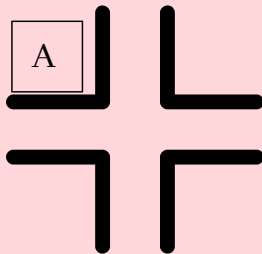
Go straight
ahead



Go past



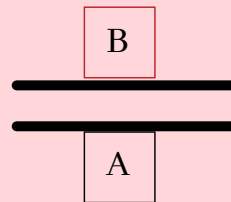
Cross



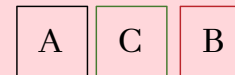
At the
corner of...



Next to



Opposite



Between



Hospital



Train Station



Café



Police Station



Museum



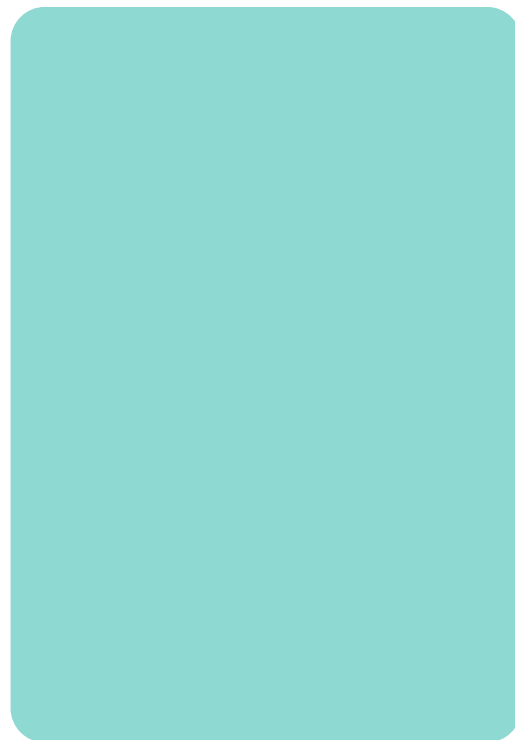
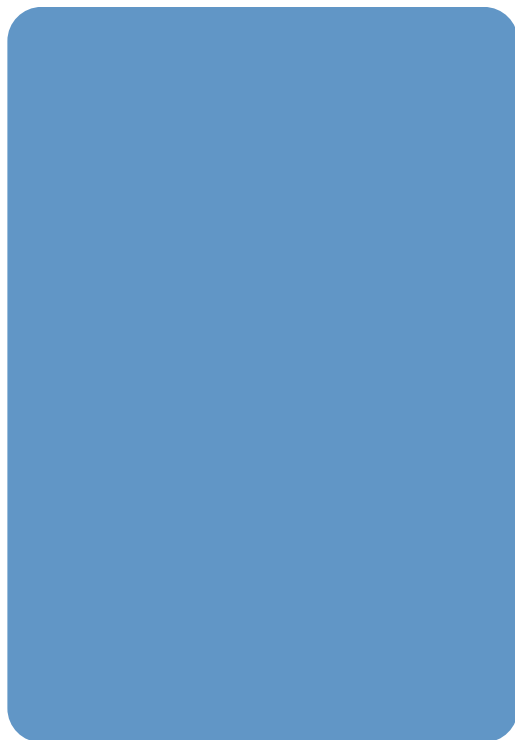
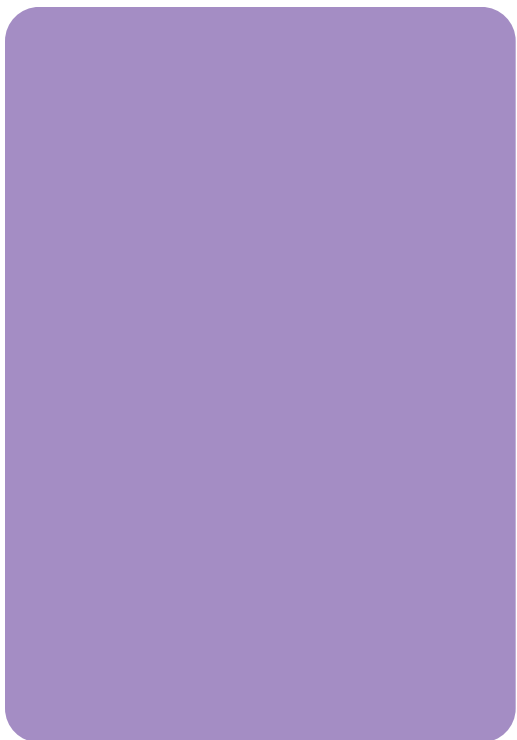
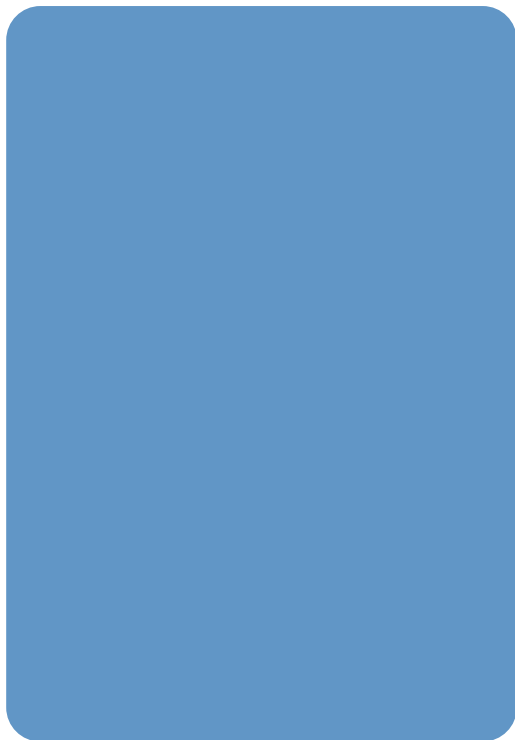
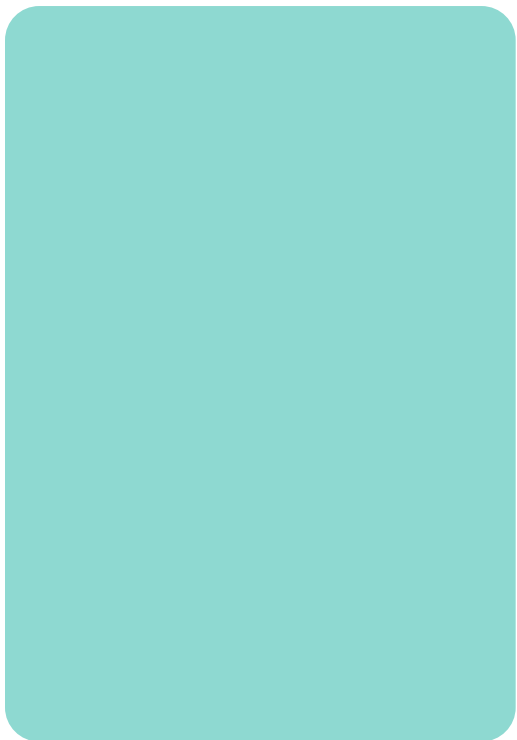
Supermarket

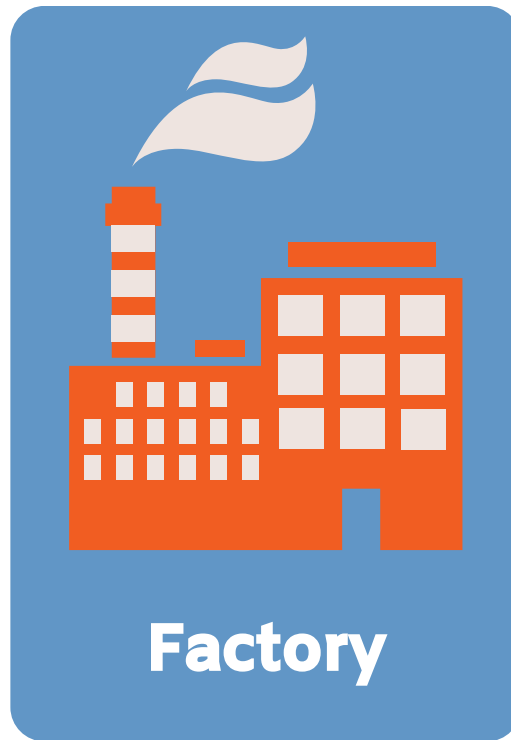
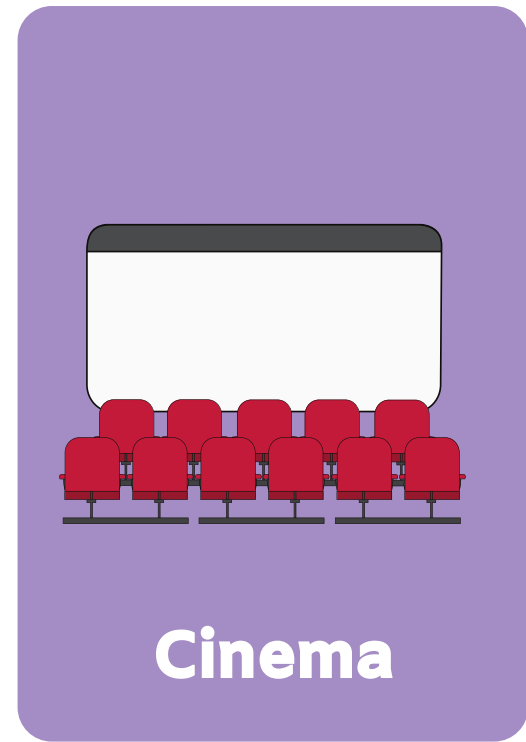
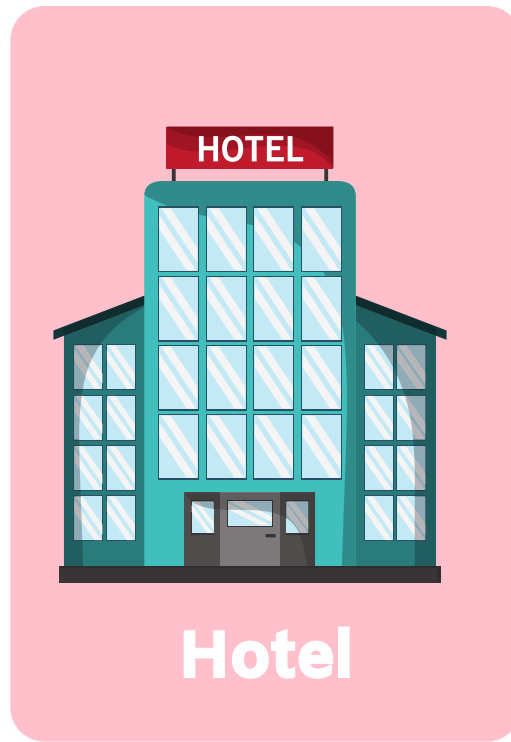
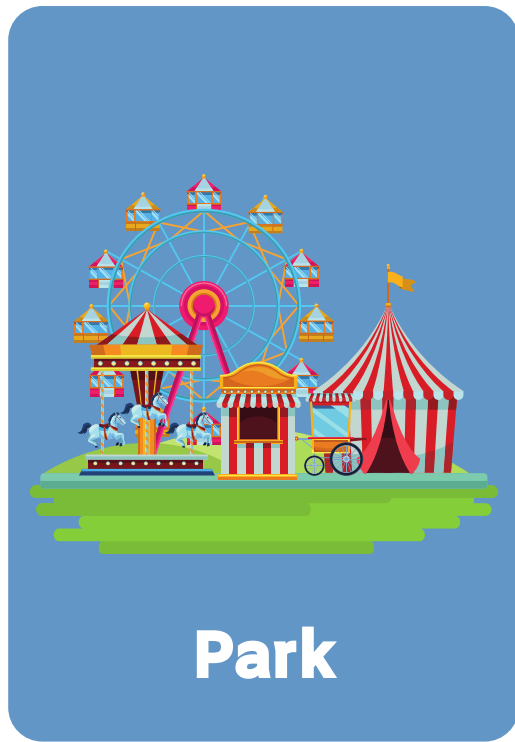


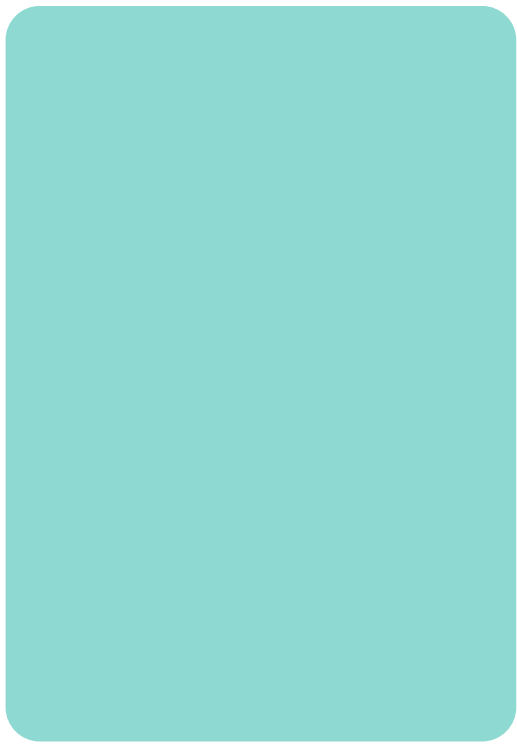
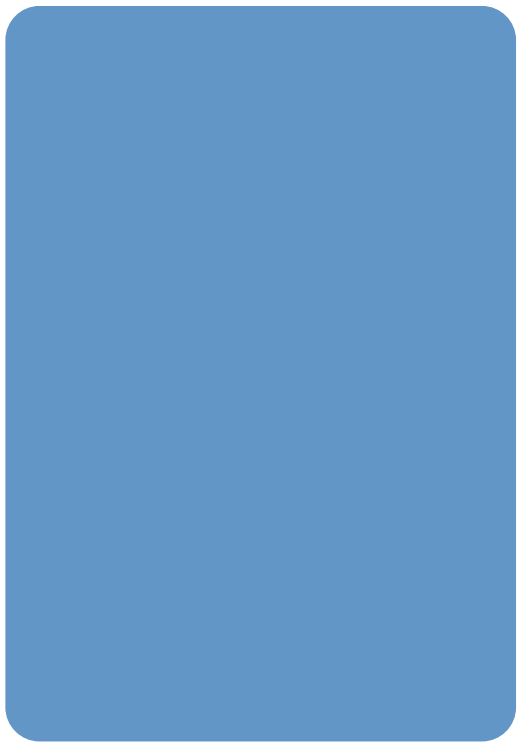
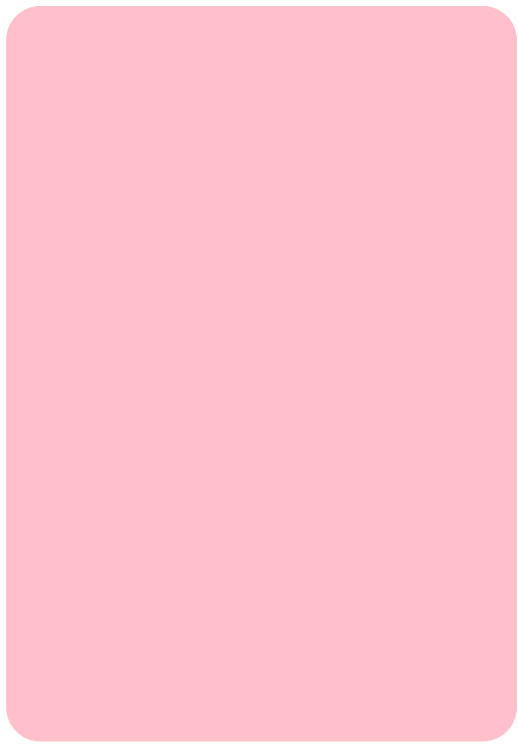
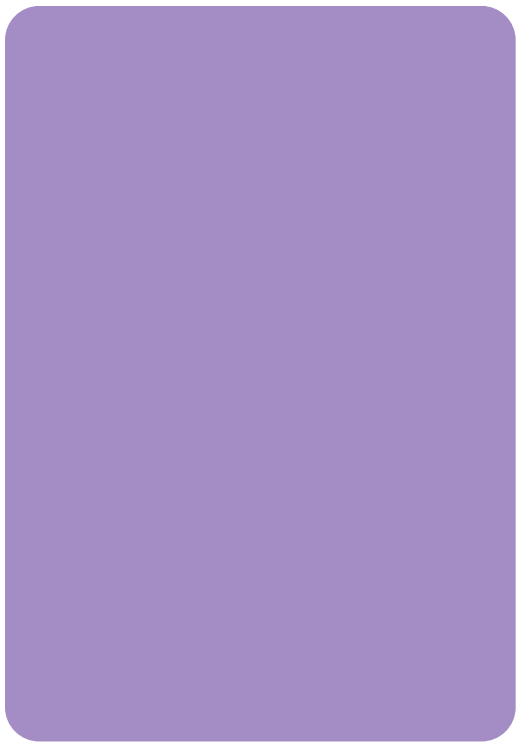
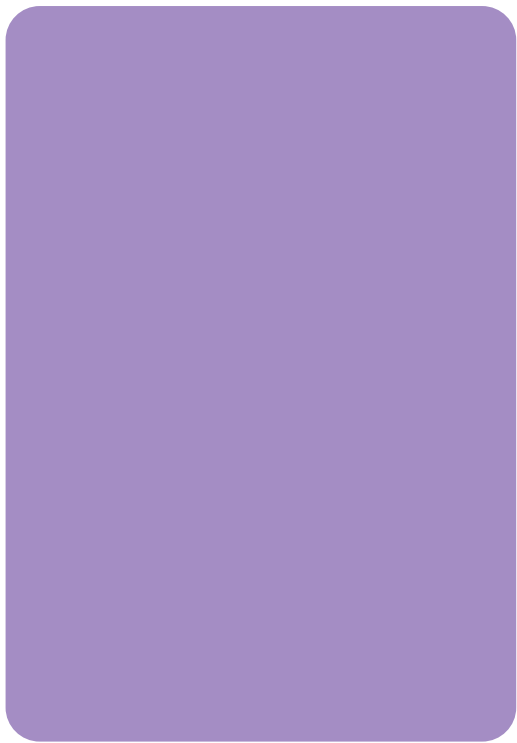
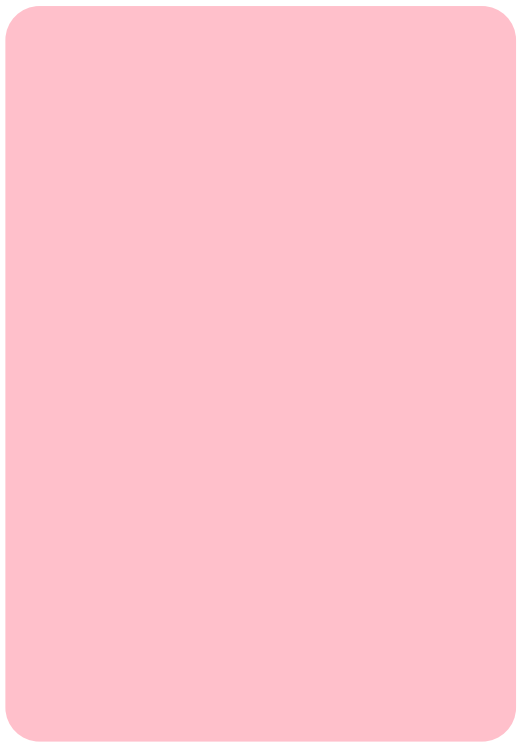
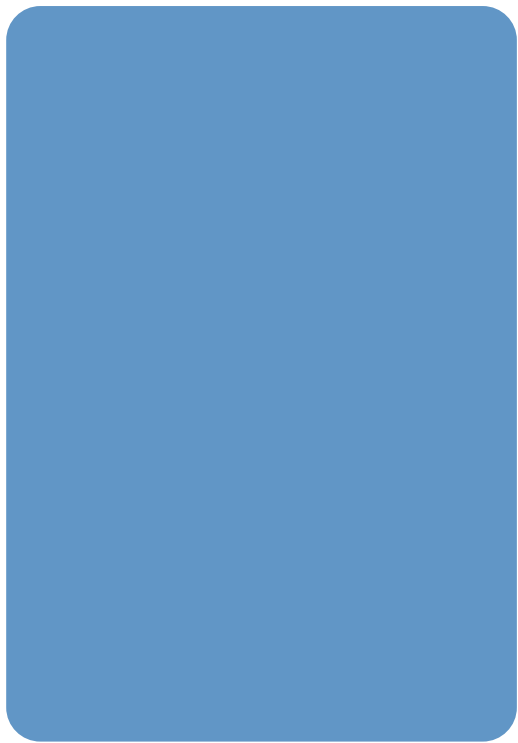
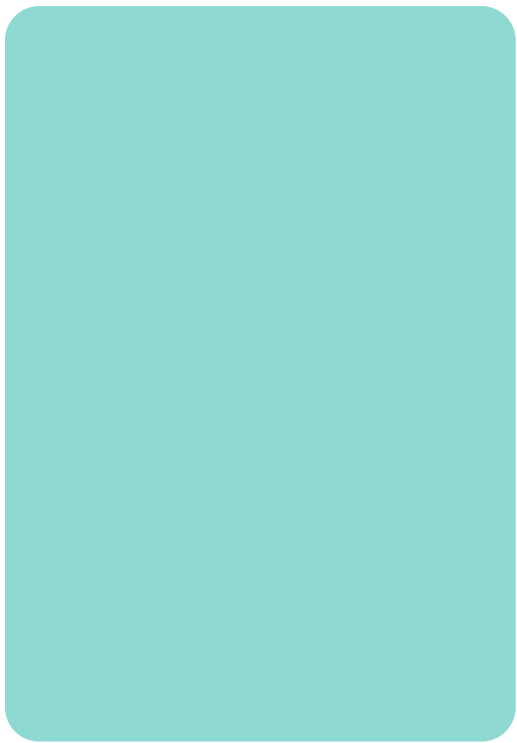
Newsagent's



Bus stop











Instructions

1. Between the park and the parking there is a hospital.
2. In front of the mountain and opposite the red car there is a post office.
3. The police is opposite the cinema.
4. In the parking there is a café.
5. The newsagent's is behind the bus stop.
6. The lorry is in front of the hotel.
7. In the roundabout there are some trees.
8. The white and brown cat is looking the bakery.
9. Next to the trees there are three shops.
10. Between the hotel and the bakery there is a supermarket.

